

MANA MAOLI

For Organization Information: www.manamaoli.org

For Information on our Mana Mele Project: www.manamele.org

OUR MISSION

HO'OKUMU

Build grounding & foundation.

To foster a sense of esteem, stewardship, and kuleana to the 'āina, our communities and ourselves, through grounding in the ancestral knowledge and practices of Hawai'i and the academic skills necessary to excel in the 21st century.

HO'OKELE

Forge directions & connections.

To explore and inquire in ways that build upon our ancestral wisdom and bridge to other communities and cultures in a harmonious manner.

HO'OMANA

Provide sustenance & empowerment.

To provide sustenance and empowerment for ourselves and our communities by striving for high academic, cultural, social, environmental, and economic standards, thus nourishing all piko – mental, emotional, spiritual and physical.

WHO WE ARE



Mana Maoli (MM) is a 501(c)(3) nonprofit, driven by a collective of educators, Creative Industry professionals, cultural practitioners, families, and the 'opio (youth) we serve. We share a common vision of and action toward empowerment through three primary means:

- 1 community-based education and awareness
- 2 pooling and sharing of resources
- 3 environmental and economic sustainability at the levels of self and community

Our organization founded Hālau Kū Māna Public Charter School in 2001, and a sailing canoe program, Kānehūnāmoku Voyaging Academy, in 2002. In 2001, MM founded the volunteer-driven Maoli Music Program, which evolved into the Mana Mele Project in 2013.

Program services under our Mana Mele Project have expanded to serve thousands of youth from 20 partner schools across 3 islands, continuing to meet increasing demand for academic and cultural excellence in music and the Creative Industries. We primarily serve low income, Native Hawaiian youth ages 5-21. We welcome young people of all abilities, engaging both those who lack prior music experience, and those who already have intermediate to advanced skills.

NI'HAU

O'AHU ISLAND

- Ka Waihona o Ka Na'auao PCS
- Kamaile Academy PCS
- Mālama Honua PCS
- S.M Kamakau LPCS
- Hakipu'u Academy PCS

- Roosevelt High School
- Jarrett Middle School
- Pauoa Elementary School
- Saint Louis School
- Hālau Kū Māna PCS

KAUA'I ISLAND

- Kanuikapono Charter School
- Kawaikini PCS
- Ke Kula Ni'ihau o Kekaha
- Kula Aupuni Ni'ihau A Kahelelani Aloha

MOLOKA'I

LANA'I

MAUI

KAHO'OLAWE

HAWAI'I ISLAND

- Ka 'Umeke Kā'eo PCS
- Kanu O Ka 'Āina PCS
- Ke Ana La'ahana PCS
- Ke Kula 'O Nāwahīokalaniopu'u PCS
- Kua O Ka Lā PCS

OUR PARTNER SCHOOLS

Our 20 partner schools include all 15 Hawaiian culture-based Public Charter Schools.

OUR PROGRAMS



STARTING A NEW PROGRAM Here's the start of something new and historic for us, and it's definitely a promising opportunity for leadership development!

The Mana Maoli Kupu Collective is an all-star band of select invitees among our alumni, ages 18-22. The idea is for them to learn from our seasoned mentors while also serving as mentors and role models for our Mana Maoli Youth Collective, an all-star band of select invitees among our students in grades 8-12. With these unique opportunities to represent us and to give back to their community, youth develop leadership skills in a real world setting - i.e. communication, teamwork, public speaking and performance.

INTERNSHIPS Despite the pandemic challenges, we were still able to facilitate both off-campus internships and on-campus mentorships. These range from 1-day sessions, which we've done with up to 20 students at film shoots, to students working with our digital storytelling team across a full semester or school year - even longer in some cases - as audio engineering or video production interns across multiple projects. Opportunities like this foster youth leadership and job readiness, and sometimes even job opportunities.

We currently have 7 staff who started off as a student and/or intern of our programs. This is over 1/3 of our current team members. Further, 2 of the 5 current 'hui' or team leaders started off as students/interns.



20 SCHOOLS

61 CLASSES

1,996 STUDENTS

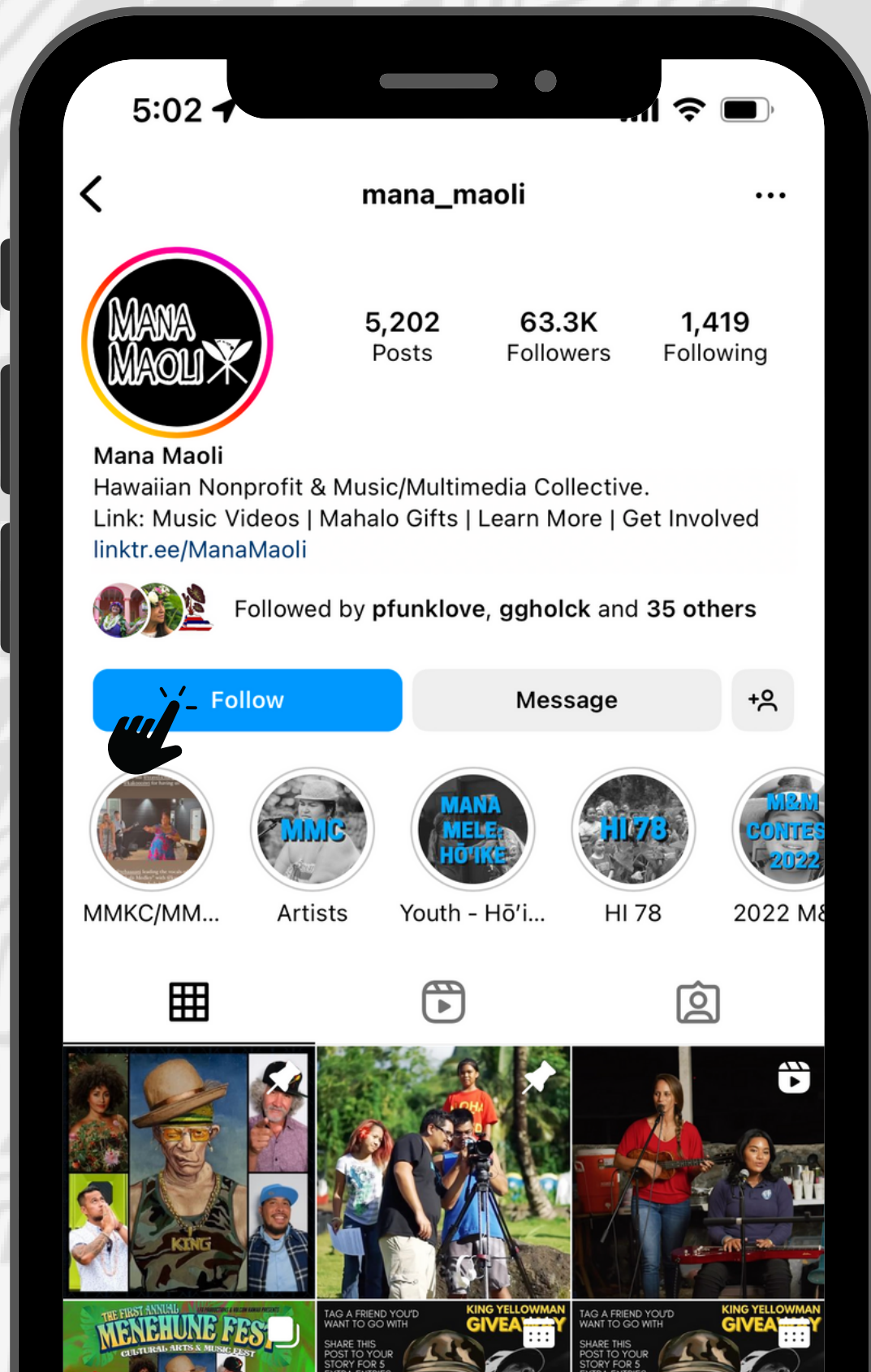
46,000+ CONTACT HOURS

88% NATIVE HAWAIIANS & OTHER PACIFIC ISLANDERS

THE IMPACT



COMMUNITY OUTREACH



@mana_maoli

www.instagram.com/mana_maoli



Mana Maoli

www.facebook.com/ManaMaoliCollective



Mana Maoli

www.youtube.com/@ManaMaoli/featured

Total views

119 million

Followers & Subscribers

283,000

ARTIST SUPPORT

ARTIST SCHOOL VISITS

A big mahalo to these artists who supported Mana Maoli with Artist School Visits in 2022.



2022 BOARD OF DIRECTORS

John Cruz
Board Chair



Wayne Enos
Board Secretary
& Treasurer



Theone Kanuha
Board Member



August Lopaka Colon
Board Member



Keola Nakanishi
Executive Director



FINANCES

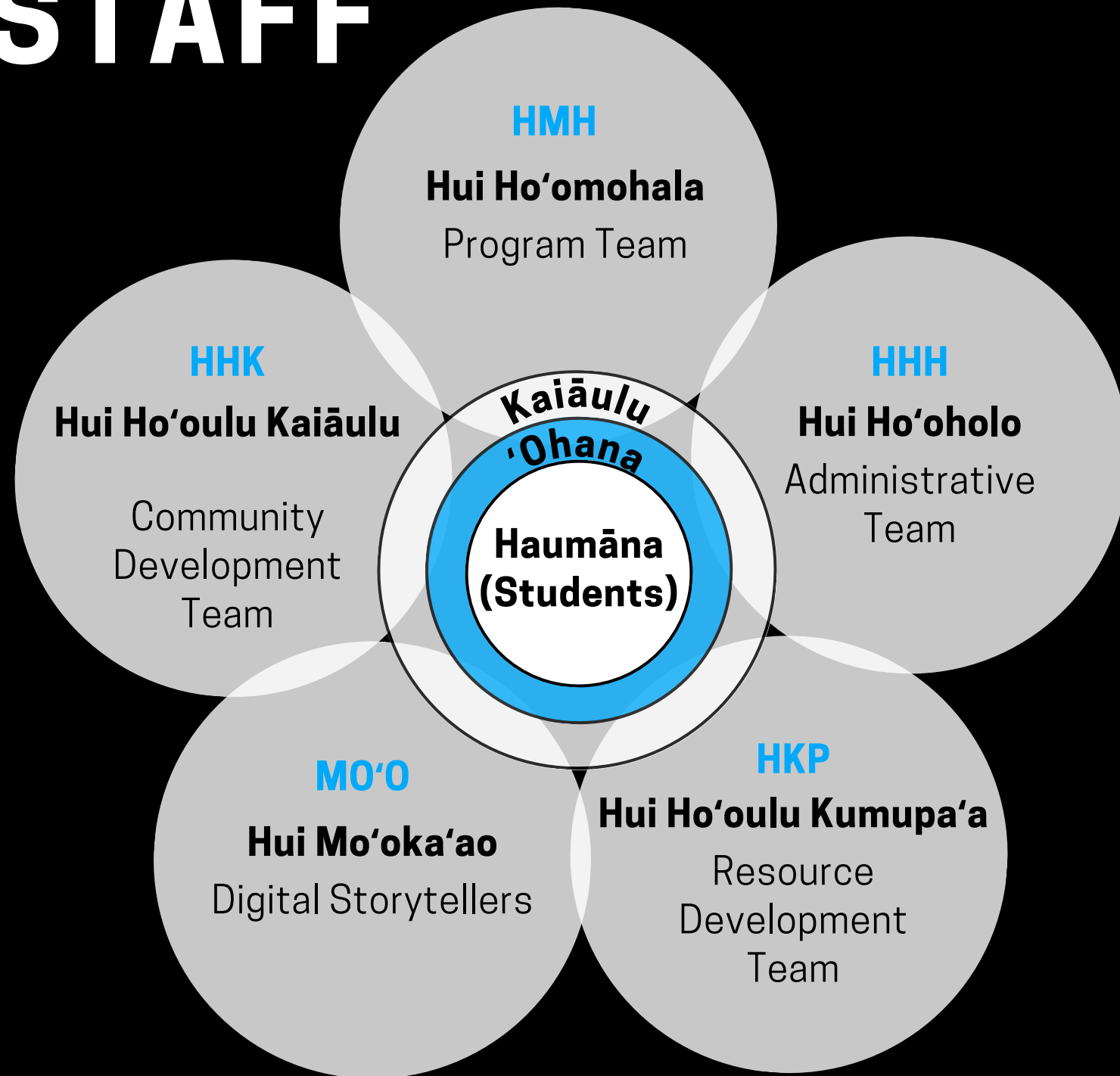
July 2021 - June 2022, unaudited

REVENUE	
Grants	1,344,374.10
Unrestricted revenue	108,235
Restricted revenue	100
Passthrough	-296
TOTAL	1,455,683

EXPENSES	
Administration	181,489
Other/Miscellaneous	870
Payroll	505,571
Supplies	230,899
Travel	31,538
Services & Activities	72,491
Professional/Contract Services	200,126
Stipends	31,831
Write-off	17,660
TOTAL	1,272,475

NET ASSETS	
Total Assets	1,278,828.63
Total Liabilities	-1,278,828.63
NET ASSETS	0

STAFF



Pōmaika'i Keawe
Kapali Bilyeu
Kumu

Candy Diaz Genegabus
Melisa Orozco Vargas
Ruben Jimenez

HMH

Li'i Sarsona

Moea Kekauoha

Nela Tolentino

HHK

Kelli Heath Cruz
Keanu Alop
Ivy Lagodlagod

Mālie Lyman
Brad Watanabe

MO'O

Jai Li
Matt May

Lien Nguyen
Erik Yoshimoto
'Ihilani Guitierrez

Pua Perkins
Keola Nakanishi

HHH

Faios Le'au

HKP

MORE WAYS TO SUPPORT



www.manamaoli.org
www.manamele.org

Write reviews of our programs and events

Sign up to volunteer

Donate



@Mana Maoli



Sign Up for our E-Newsletter!

**MAHALO FOR
YOUR SUPPORT!**

